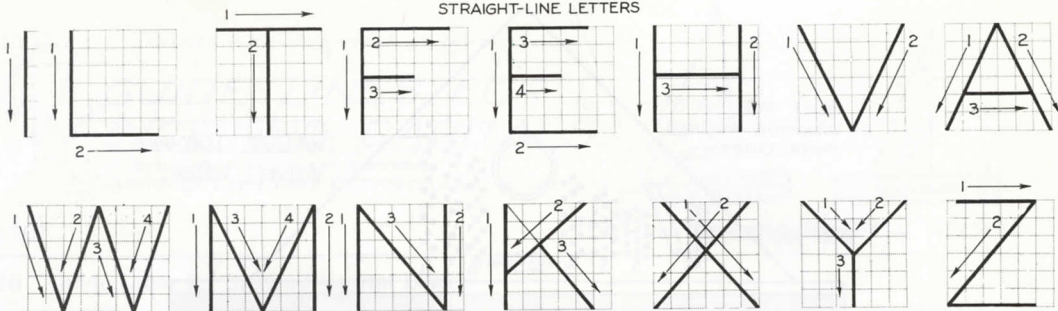
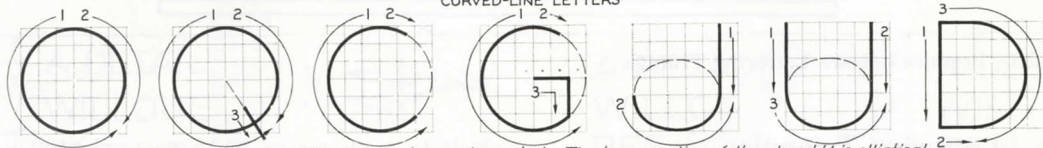


### STRAIGHT-LINE LETTERS



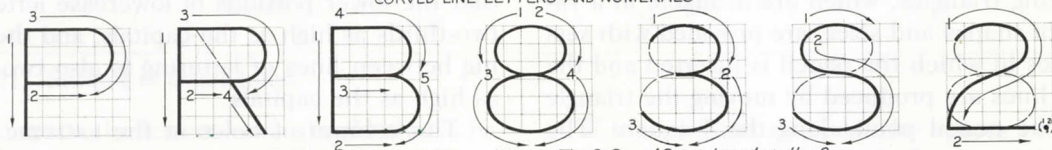
*L* and *W* is only letter over 6 units wide. Letters in "TOM Q. VAXY" are 6 units wide—all others are 5, except "I" and "W".

### CURVED-LINE LETTERS

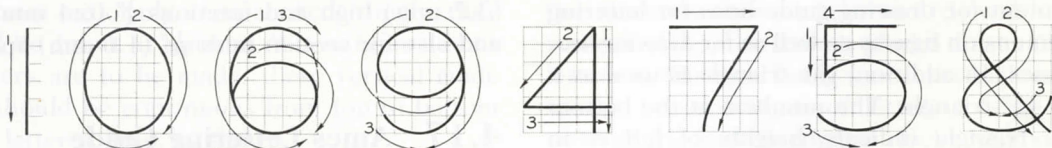


The letters O, Q, C, G, and D are based on a true circle. The lower portion of the J and U is elliptical.

### CURVED-LINE LETTERS AND NUMERALS



The B is composed of two ellipses. The 3, S, and 2 are based on the 8.



The O, 6, and 9 are elliptical.